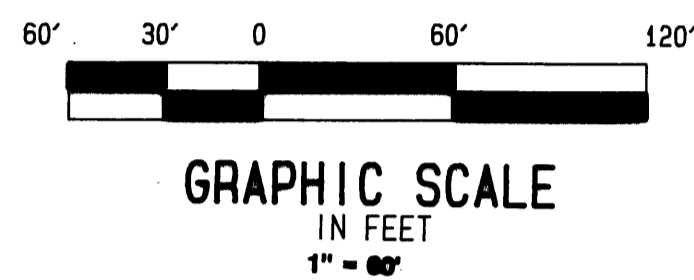
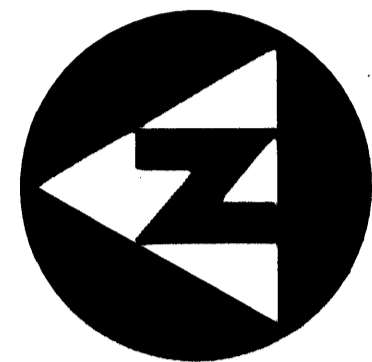


HAMMOCK CREEK PLAT NO. 1

BEING A REPLAT OF A PORTION OF LOT 10, MILES OR HANSON GRANT, RECORDED IN PLAT BOOK 1, PAGE 11, PUBLIC RECORDS, PALM BEACH (NOW MARTIN) COUNTY, FLORIDA, AND BEING A REPLAT OF A PORTION OF BLOCK 24, PLAT OF PALM CITY FARMS, RECORDED IN PLAT BOOK 6, PAGE 42, PUBLIC RECORDS, PALM BEACH (NOW MARTIN) COUNTY, FLORIDA, LYING IN SECTION 24, TOWNSHIP 38 SOUTH, RANGE 40 EAST, MARTIN COUNTY, FLORIDA.

This instrument was prepared by Wm. R. Van Campen, R.L.S., in and for the offices of Bench Mark Land Surveying & Mapping, Inc.
BENCH MARK Land Surveying and Mapping, Inc.
4152 West Blue Heron Blvd, Suite 121, Riviera Beach, FL 33404, Ph (407) 848-2102
DWN get CKD WO.# p150 FILE .pnt



SEE SHEET 9 OF 13

NOT PART OF THIS PLAT

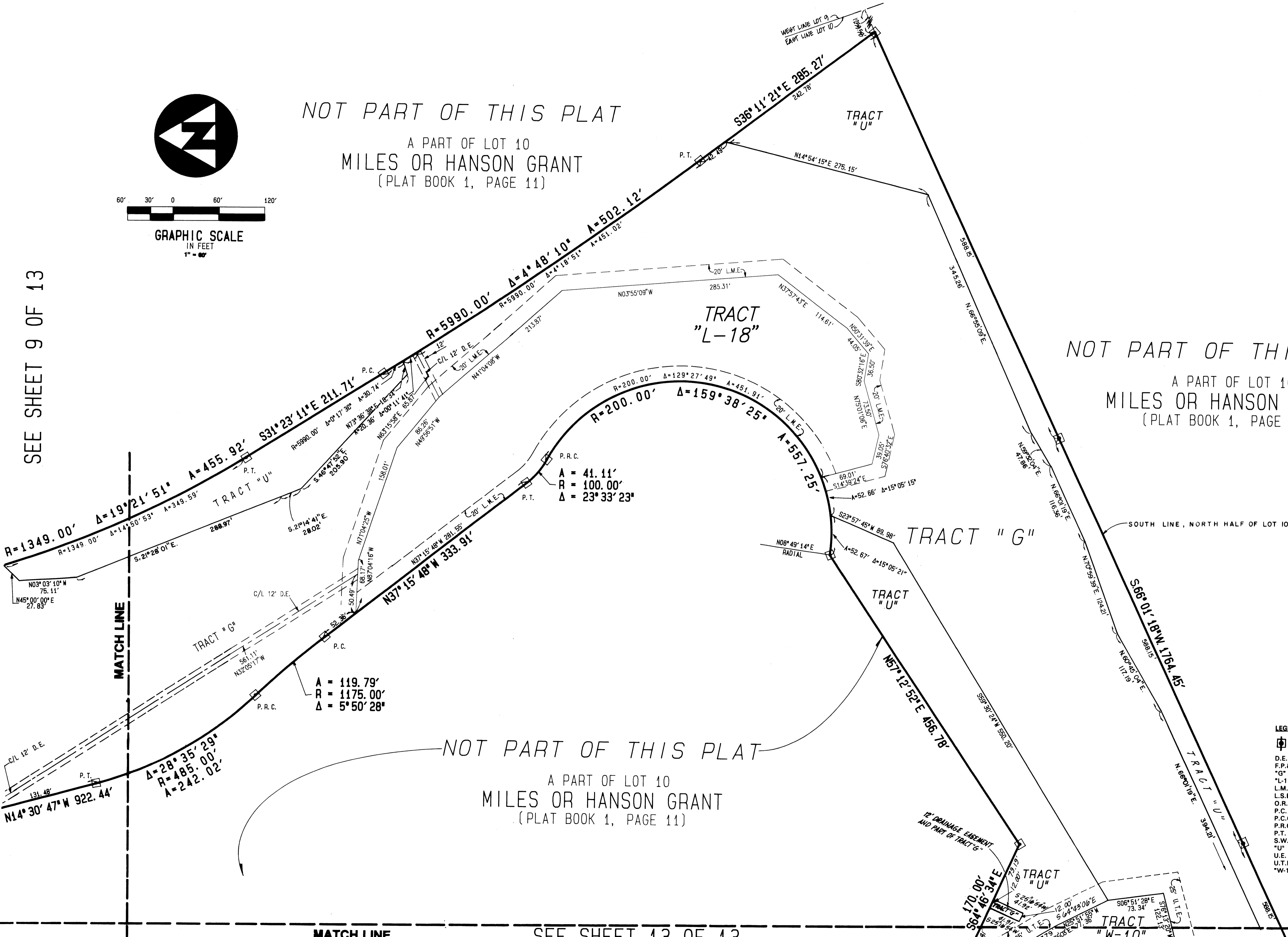
A PART OF LOT 10
MILES OR HANSON GRANT
(PLAT BOOK 1, PAGE 11)

NOT PART OF THIS PLAT

A PART OF LOT 10
MILES OR HANSON GRANT
(PLAT BOOK 1, PAGE 11)

NOT PART OF THIS PLAT

A PART OF LOT 10
MILES OR HANSON GRANT
(PLAT BOOK 1, PAGE 11)



- LEGEND:**
- INDICATES SET #2424 PERMANENT REFERENCE MONUMENT (P.R.M.)
 - D.E. INDICATES DRAINAGE EASEMENT
 - F.P. & L. INDICATES FLORIDA POWER AND LIGHT
 - "G" INDICATES GOLF COURSE TRACT
 - "L-1" INDICATES LAKE TRACT
 - L.M.E. INDICATES LAKE MAINTENANCE EASEMENT
 - L.S.E. INDICATES LIFT STATION EASEMENT
 - O.R.B. INDICATES OFFICIAL RECORD BOOK
 - P.C. INDICATES POINT OF CURVATURE
 - P.C.C. INDICATES POINT OF COMPOUND CURVATURE
 - P.R.C. INDICATES POINT OF REVERSE CURVATURE
 - P.T. INDICATES POINT OF TANGENCY
 - S.W. INDICATES SOUTHWEST
 - "U" INDICATES UPLAND PRESERVE TRACT
 - U.E. INDICATES UTILITY EASEMENT
 - U.T.E. INDICATES UPLAND TRANSITION EASEMENT
 - "W-1" INDICATES WETLAND PRESERVE TRACT

MATCH LINE

SEE SHEET 13 OF 13

MATCH LINE